



# BLACK CAT

WEAR PARTS

# RVS SHROUDS



## REVOLUTION

A Black Cat Innovation



Series	Center	LH	RH	Weight	Fits Thickness	Length	Bevel Angle	Spade >	Eqpt.	Base	Rubber Bolt Seat	T-Nut Lock	Bolt
200	RVS200C1350	RVS200L1350	RVS200R1350	142.0 lb 64.4 kg	2.00" 51 mm	13.50" 343 mm	30°	12	Loader	RVS7B	RVS1BL	RVS7LP	RVS1B
250	RVS250C1500-22	RVS250L1500-22	RVS250R1500-22	165.0 lb 74.8 kg	2.50" 64 mm	15.00" 381 mm	22.5°	12	Loader				
275	RVS275C0950	RVS275L0950	RVS275R0950	89.4 lb 40.6 kg	2.75" 70 mm	9.50" 241 mm	30°	12	Excavator				
	RVS275C1625	RVS275L1625	RVS275R1625	200.0 lb 90.7 kg		16.25" 413 mm	30°	12	Loader				
	RVS275C1775	RVS275L1775	RVS275R1775	220.0 lb 99.8 kg		17.75" 451 mm	30°	12	Loader				
RVS275C2000-22	RVS275L2000-22	RVS275R2000-22	203.0 lb 92.1 kg	20.00" 508 mm		22.5°	15	Loader					
300	RVS300C1200	RVS300L1200	RVS300R1200	148.0 lb 67.1 kg	3.00" 76 mm	12.00" 305 mm	30°	12	Excavator				
	RVS300C1700	RVS300L1700	RVS300R1700	252.0 lb 114.3 kg		17.00" 432 mm	30°	12	Loader				
	RVS300C1700-22	RVS300L1700-22	RVS300R1700-22	189.0 lb 85.7 kg		17.00" 432 mm	22.5°	15	Loader				
350	RVS350C0950	RVS350L0950	RVS350R0950	113.0 lb 51.3 kg	3.50" 89 mm	9.50" 241 mm	30°	12	Excavator				
	RVS350C1250	RVS350L1250	RVS350R1250	147.0 lb 66.7 kg		12.50" 318 mm	30°	12	Excavator				
400	RVS400C1150	RVS400L1150	RVS400R1150	221.0 lb 100.2 kg	4.00" 102 mm	11.50" 292 mm	30°	12	Excavator				
	RVS400C1350	RVS400L1350	RVS400R1350	237.0 lb 107.5 kg		13.50" 343 mm	30°	12	Excavator				
	RVS400C1475	RVS400L1475	RVS400R1475	322.0 lb 146.1 kg		14.75" 375 mm	30°	12	Excavator				
	RVS400C1650	RVS400L1650	RVS400R1650	313.0 lb 142.0 kg		16.50" 419 mm	30°	15	Excavator				
475	RVS475C1300	RVS475L1300	RVS475R1300	251.0 lb 113.9 kg	4.75" 121 mm	13.00" 330 mm	30°	12	Excavator				
	RVS475C1500	RVS475L1500	RVS475R1500	276.0 lb 125.2 kg		15.00" 381 mm	30°	12	Excavator				
	RVS475C1600	RVS475L1600	RVS475R1600	291.0 lb 132.0 kg		16.00" 406 mm	30°	12	Excavator				
	RVS475C1725	RVS475L1725	RVS475R1725	307.0 lb 139.3 kg		17.25" 438 mm	30°	12	Excavator				
550	RVS550C1650	RVS550L1650	RVS550R1650	326.0 lb 147.9 kg	5.50" 140 mm	16.50" 419 mm	30°	11.5	Excavator				
	RVS550C1825	RVS550L1825	RVS550R1825	349.0 lb 158.3 kg		18.25" 464 mm	30°	11.5	Excavator				
	-	RVS550L2250	RVS550R2250	463.0 lb 210.0 kg		22.50" 572 mm	30°	11.5	Excavator				

Black Cat Wear Parts Ltd. produces after market replacement products designed to work with specific third party wear part systems. Reference to Caterpillar, ESCO, Super V, SV2 and other third party trademarks referred to in this publication are for informational, comparative, and descriptive purposes only. Black Cat Wear Parts Ltd. does not claim any ownership in or license to use any third party trademarks referred to in this publication and is not affiliated with, nor does it make, use or sell any products manufactured by any owner of such trademarks.

[www.blackcatwearparts.com](http://www.blackcatwearparts.com)  
[sales@blackcatwearparts.com](mailto:sales@blackcatwearparts.com)  
 +1-780-465-6666  
 1-800-661-6666

**STRONG ENOUGH  
TO ANSWER ANY CALL!**

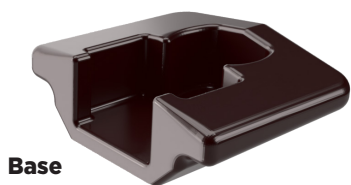
280.0326



# BLACK CAT

WEAR PARTS

# RVS SHROUDS



Base



Rubber Bolt Seat



T-Nut Lock



Bolt

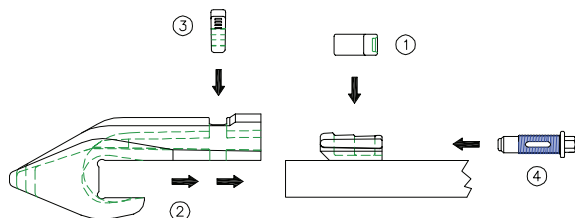
## Vertical Shrouds

Series	Center	LH	RH	Weight	Fits Thickness	Length	Base	Rubber Bolt Seat	T-Nut Lock	Bolt
100	RVS100V2370	-	-	31.0 lb 14.1 kg	1.00" 25 mm	23.75" 603 mm	RVS5B	RVS34BL	RVS34LP	RVS34B
	RVS100V2370R64	Curved for material handling buckets		31.0 lb 14.1 kg		23.75" 603 mm				
150	RVS150V1200	-	-	33.0 lb 15.0 kg	1.50" 38 mm	12.00" 305 mm				
	RVS150V1600	-	-	44.0 lb 20.0 kg		16.00" 406 mm				
200	RVS200V1800	-	-	89.0 lb 40.4 kg	2.00" 51 mm	18.00" 457 mm				
250	RVS250V1800	-	-	99.0 lb 44.9 kg	2.50" 64 mm	18.00" 457 mm				
300	RVS300V2000	-	-	190.0 lb 86.2 kg	3.00" 76 mm	20.00" 508 mm				
350	RVS350V3000	-	-	418.0 lb 189.6 kg	3.50" 89 mm	30.00" 762 mm				
550	RVS550V3200	-	-	541.0 lb 245.4 kg	5.50" 140 mm	32.00" 813 mm				

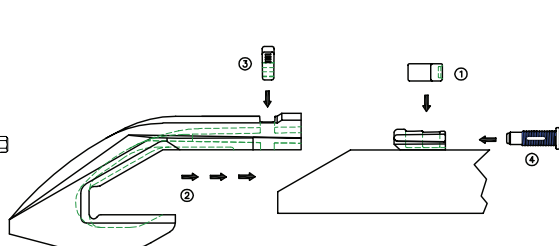
## Lower Vertical Shrouds

Series	Center	LH	RH	Weight	Fits Thickness	Base	Rubber Bolt Seat	T-Nut Lock	Bolt
200	-	RVSLW200L	RVSLW200R	95.1 lb 43.1 kg	2.00" 51 mm	RVS7B	RVS1BL	RVS7LP	RVS1B
250	-	RVSLW250L	RVSLW250R	102.5 lb 46.5 kg	2.50" 64 mm				
300	-	RVSLW300L	RVSLW300R	214 lb 97.1 kg	3.00" 76 mm	RVS9B	RVWSBL	RVWSLP10	RVWSB2
350	-	RVSLW350L	RVSLW350R	266.8 lb 121.0 kg	3.50" 89 mm				
550	-	RVSLW550L	RVSLW550R	342 lb 155.1 kg	5.50" 140 mm	RVS13B	RVS175BL	RVS11LP	RVS175B

### RVS Vertical Shrouds Installation



### RVS Lip Shrouds Installation



### Steps:

1. Insert the rubber/steel lock into the base cavity.
2. Slide the shroud over the base/lock assembly.
3. Insert the locking plate through the slot in the shroud.
4. Insert and tighten the bolt through the locking plate.

Tighten to approximately 150 foot pounds. Do not overtighten.