



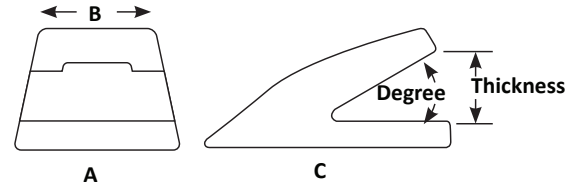
# BLACK CAT

WEAR PARTS

# LIP, HEEL & CORNER PROTECTION

## Weld On Lip Shrouds

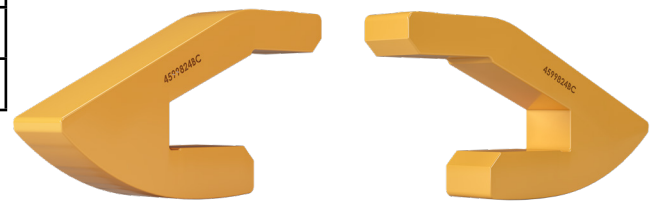
| Part Number | Weight               | Lip Thickness                    | Degree | A                | B                | C                |
|-------------|----------------------|----------------------------------|--------|------------------|------------------|------------------|
| 4ML50UC     | 14.6 lb<br>6.6 kg    | 1.25" - 2.00"<br>32 mm - 51 mm   | 30°    | 5.59"<br>142 mm  | 5.15"<br>131 mm  | 8.12"<br>206 mm  |
| 10WS        | 19.6 lb<br>8.9 kg    | 1.50"<br>38 mm                   | 30°    | 10.00"<br>254 mm | 7.00"<br>178 mm  | 7.38"<br>187 mm  |
| 13WS        | 40.7 lb<br>18.5 kg   | 1.75"<br>44 mm                   | 23°    | 13.00"<br>330 mm | 10.00"<br>254 mm | 10.25"<br>260 mm |
| WS25        | 4.0 lb<br>1.8 kg     | 1.75"<br>44 mm                   | 22°    | 2.50"<br>64 mm   | 2.50"<br>64 mm   | 4.88"<br>124 mm  |
| WS45        | 14.2 lb<br>6.4 kg    | 1.75" - 2.00"<br>44 mm - 51 mm   | 30°    | 4.50"<br>114 mm  | 4.50"<br>114 mm  | 7.17"<br>182 mm  |
| WLS2002224  | 107.7 lb<br>48.9 kg  | 2.00"<br>51 mm                   | 22°    | 24.00"<br>610 mm | 24.00"<br>610 mm | 8.57"<br>218 mm  |
| WLS2003024  | 122.1 lb<br>55.4 kg  | 2.00"<br>51 mm                   | 30°    | 24.00"<br>610 mm | 24.00"<br>610 mm | 9.18"<br>233 mm  |
| WLS2502224  | 142.3 lb<br>64.5 kg  | 2.50"<br>64 mm                   | 22°    | 24.00"<br>610 mm | 24.00"<br>610 mm | 10.23"<br>260 mm |
| WLS2503024  | 171.1 lb<br>77.6 kg  | 2.50"<br>64 mm                   | 30°    | 24.00"<br>610 mm | 24.00"<br>610 mm | 11.33"<br>288 mm |
| WS80        | 33.4 lb<br>15.1 kg   | 2.50" - 3.00"<br>64 mm - 76 mm   | 30°    | 8.00"<br>203 mm  | 7.00"<br>178 mm  | 8.57"<br>218 mm  |
| 4ML70UC     | 45.3 lb<br>20.5 kg   | 2.50" - 3.00"<br>64 mm - 76 mm   | 30°    | 9.47"<br>241 mm  | 8.93"<br>227 mm  | 9.49"<br>241 mm  |
| WLS3002224  | 222.9 lb<br>101.1 kg | 3.00"<br>76 mm                   | 22°    | 24.00"<br>610 mm | 24.00"<br>610 mm | 12.72"<br>323 mm |
| WLS3003024  | 202.6 lb<br>91.9 kg  | 3.00"<br>76 mm                   | 30°    | 24.00"<br>610 mm | 24.00"<br>610 mm | 12.72"<br>323 mm |
| 4599824BC   | 19.1 lb<br>8.7 kg    | 3.15"<br>80 mm                   | 22°    | 2.28"<br>58 mm   | 2.28"<br>58 mm   | 12.17"<br>309 mm |
| WLS3503024  | 271.6 lb<br>123.2 kg | 3.50"<br>89 mm                   | 30°    | 24.00"<br>610 mm | 24.00"<br>610 mm | 14.74"<br>374 mm |
| WLS4003024  | 417.1 lb<br>189.2 kg | 4.00"<br>102 mm                  | 30°    | 24.00"<br>610 mm | 24.00"<br>610 mm | 17.46"<br>443 mm |
| STR120UC    | 85.2 lb<br>38.6 kg   | 4.00" - 4.75"<br>102 mm - 121 mm | 30°    | 12.16"<br>309 mm | 10.40"<br>264 mm | 9.23"<br>234 mm  |
| STR120LD    | 83.3 lb<br>37.8 kg   | 4.00" - 4.75"<br>102 mm - 121 mm | 30°    | 11.90"<br>302 mm | 9.50"<br>241 mm  | 9.14"<br>232 mm  |
| STR120RD    | 83.9 lb<br>38.1 kg   | 4.00" - 4.75"<br>102 mm - 121 mm | 30°    | 11.90"<br>302 mm | 9.50"<br>241 mm  | 9.14"<br>232 mm  |



**WLS2003024**



**STR120UC**



**4599824BC**

Caterpillar® and other identities and/or trademarks referred to in this publication are the registered marks of the entities noted herein. The use of any trademarks of others than Black Cat Wear Parts Ltd. are solely and exclusively for identification, informational, comparative, and descriptive purposes. Black Cat Wear Parts Ltd. is not affiliated with any owner of such registered marks and does not make, use, or sell any products manufactured by any such entity identified in this publication.



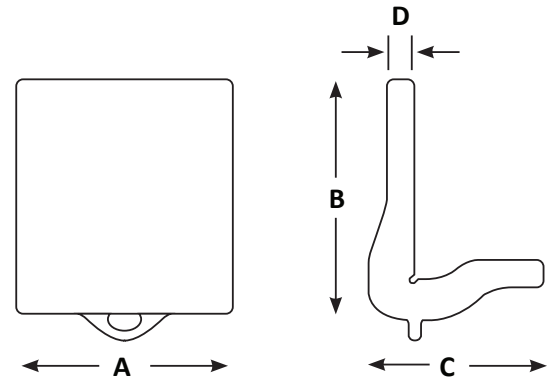
# BLACK CAT

WEAR PARTS

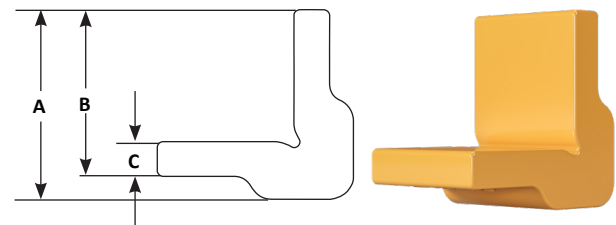
# LIP, HEEL & CORNER PROTECTION

## Weld On Heel Shrouds

| Part Number  | Description | Weight              | A                | B                | C                | D               |
|--------------|-------------|---------------------|------------------|------------------|------------------|-----------------|
| CG03         | Straight    | 5.4 lb<br>2.4 kg    | 3.00"<br>76 mm   | 4.12"<br>105 mm  | 3.62"<br>92 mm   | 0.75"<br>19 mm  |
| MM120BHS     | Curved      | 9.3 lb<br>4.2 kg    | 4.59"<br>117 mm  | 5.12"<br>130 mm  | 3.94"<br>100 mm  | 1.37"<br>35 mm  |
| 2804079      | Curved      | 9.3 lb<br>4.2 kg    | 4.70"<br>119 mm  | 5.90"<br>150 mm  | 4.30"<br>109 mm  | 0.79"<br>20 mm  |
| 2804078      | Straight    | 10.8 lb<br>4.9 kg   | 4.70"<br>119 mm  | 5.90"<br>150 mm  | 4.30"<br>109 mm  | 0.79"<br>20 mm  |
| ES6697-4     | Curved      | 22.4 lb<br>10.2 kg  | 7.49"<br>190 mm  | 7.00"<br>178 mm  | 4.00"<br>102 mm  | 1.24"<br>31 mm  |
| 1386551      | Curved      | 26.9 lb<br>12.2 kg  | 6.88"<br>175 mm  | 8.13"<br>207 mm  | 5.88"<br>149 mm  | 1.00"<br>25 mm  |
| 1386529      | Straight    | 29.6 lb<br>13.4 kg  | 6.88"<br>175 mm  | 8.13"<br>207 mm  | 5.88"<br>149 mm  | 1.00"<br>25 mm  |
| MM170BHS     | Curved      | 27.2 lb<br>12.3 kg  | 6.56"<br>167 mm  | 7.31"<br>186 mm  | 5.63"<br>143 mm  | 1.44"<br>37 mm  |
| ES6697-3     | Curved      | 29.9 lb<br>13.6 kg  | 7.49"<br>190 mm  | 7.00"<br>178 mm  | 4.00"<br>102 mm  | 1.24"<br>31 mm  |
| ST002        | Curved      | 29.2 lb<br>13.2 kg  | 11.75"<br>298 mm | 4.00"<br>102 mm  | 4.00"<br>102 mm  | 1.00"<br>25 mm  |
| ST001        | Straight    | 33.3 lb<br>15.1 kg  | 18.00"<br>457 mm | 4.00"<br>102 mm  | 4.00"<br>102 mm  | 1.00"<br>25 mm  |
| ES6697-2     | Curved      | 45.3 lb<br>20.5 kg  | 7.50"<br>191 mm  | 10.00"<br>254 mm | 6.00"<br>152 mm  | 2.00"<br>51 mm  |
| MM260BHS     | Curved      | 59.1 lb<br>26.8 kg  | 10.00"<br>254 mm | 9.00"<br>229 mm  | 7.00"<br>178 mm  | 1.69"<br>43 mm  |
| 1571027      | Curved      | 59.3 lb<br>26.9 kg  | 9.81"<br>249 mm  | 10.63"<br>270 mm | 7.88"<br>200 mm  | 1.19"<br>30 mm  |
| 1571019      | Straight    | 65.1 lb<br>29.5 kg  | 9.81"<br>249 mm  | 10.63"<br>270 mm | 7.88"<br>200 mm  | 1.19"<br>30 mm  |
| ES6697-5     | Curved      | 87.5 lb<br>39.7 kg  | 9.99"<br>254 mm  | 12.00"<br>305 mm | 8.00"<br>203 mm  | 2.00"<br>51 mm  |
| MM350BHS     | Curved      | 101.0 lb<br>45.8 kg | 13.78"<br>350 mm | 9.45"<br>240 mm  | 7.87"<br>200 mm  | 1.97"<br>50 mm  |
| ES6697-7     | Curved      | 189.5 lb<br>86.0 kg | 9.84"<br>250 mm  | 13.70"<br>348 mm | 9.88"<br>251 mm  | 3.94"<br>100 mm |
| CWS100X250-1 | Curved      | 190.8 lb<br>86.5 kg | 9.84"<br>250 mm  | 13.78"<br>350 mm | 10.24"<br>260 mm | 3.84"<br>98 mm  |



**ST001**



**CG03**

## Corner Protectors

| Part Number | Description | Weight             | Length           | A               | B              | C              |
|-------------|-------------|--------------------|------------------|-----------------|----------------|----------------|
| CG24-5      | Round Edge  | 31.5 lb<br>14.3 kg | 24.00"<br>610 mm | 3.88"<br>99 mm  | 3.50"<br>89 mm | 0.63"<br>16 mm |
| CG36-6      | Square Edge | 67.8 lb<br>30.8 kg | 36.00"<br>914 mm | 4.13"<br>105 mm | 3.63"<br>92 mm | 0.75"<br>19 mm |



**CG36-6**



**ES6697-4**