



## GRADER BITS & BOARDS



*Blunt*



*sharp*



*Large*



*Barbed Ring*



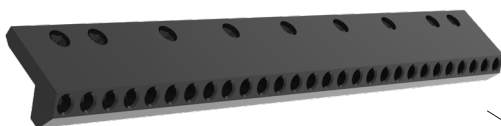
*Blunt-Washer*



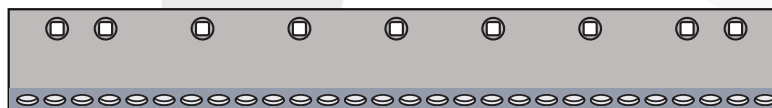
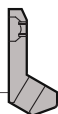
*Large-Washer*

### Grader Bits

Part Number	Insert	Washer	Fastening System	Shank Size	Head Diameter	Height	Ideal Board	Optional Board
C855HD	Blunt	-	Sleeve	0.88"	1.30"	2.84"	2000	2100, 2200, 5100
C855HDX	Blunt	-	Sleeve	0.88"	1.38"	2.88"		
C855HDX-4	Blunt	-	Sleeve	0.88"	1.38"	2.79"		
C855LR	Sharp	-	Sleeve	0.88"	1.38"	2.95"		
C855LRSW	Sharp	Square	Sleeve	0.88"	1.38"	2.95"	2100	2200, 5100
C855KCSB	Large	-	Sleeve	0.88"	1.38"	3.15"		
C858KCSB	Large	-	Sleeve	0.88"	1.45"	3.39"	2100	5100
C87DSSR	Sharp	-	Barbed Ring	0.88"	1.46"	3.58"		
C87KCSBSR	Large	-	Barbed Ring	0.88"	1.56"	3.38"	2200	5100
C387BF	Sharp	-	Sleeve	0.88"	1.50" (W1.70)	3.40"		
C87HDRP	Blunt	Round	Sleeve	0.88"	1.38" (W1.73)	3.31"	5100	-
C87WFRKCSB	Large	Round	Sleeve	0.88"	1.50" (W1.73)	3.31"		
AR15087	Flat	-	Non-rotating	0.88"	1.58"	4.11"	2500	2600
C1002443SB	Mining	-	Sleeve	1.00"	1.65"	4.00"		
GH23NGT	Mining	Square	Sleeve	1.00"	1.65" (W1.65)	4.00"		



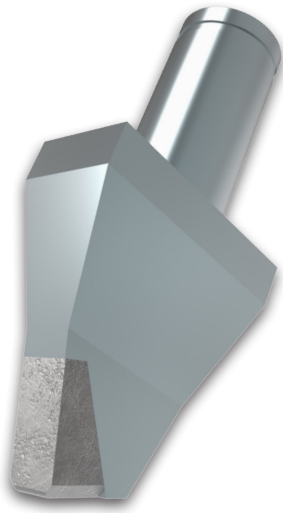
30°



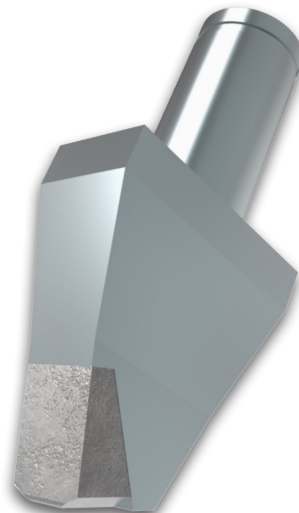
### Board Systems

Part Number	Shank size	Fastening System	Bit Spacing	Bits/3 ft board	Bits 4/ft board
2000	0.88"	Sleeve	1.50"	24	32
2100	0.88"	Sleeve/Ring	1.71"	21	28
2200	0.88"	Sleeve	2.00"	18	24
5100	0.88"	Sleeve/Ring	2.00"	18	24
2500	1.00"	Sleeve	1.71"	21	28
2600	1.00"	Sleeve	2.00"	18	24

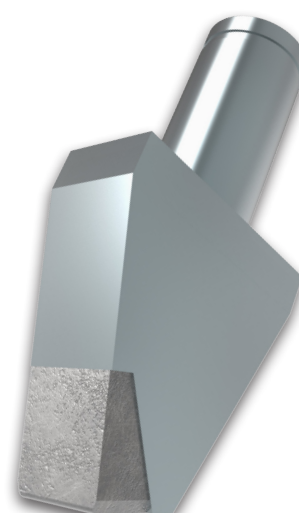
**Board Systems are punched for 3/4" Plow Bolts. Reducer bolts are available to adapt to 5/8" holes. Board Systems punched for 5/8" Plow Bolts are available with longer lead times.**



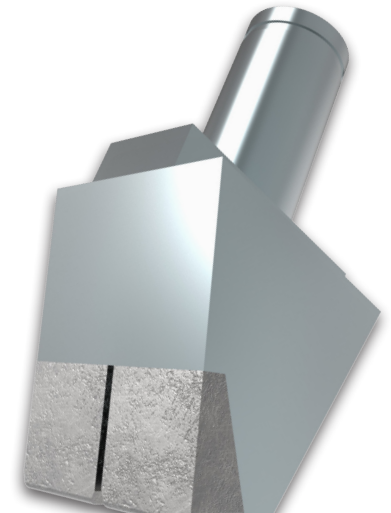
**Sharp**



**Penetration**



**Standard**



**Wide**

## Non-Rotating Bits

Part Number	Description	Weight
1055183	Sharp	2.05 lbs
1055180	Penetration	2.36 lbs
6Y4339	Standard	2.54 lbs
6Y4340	Wide	3.94 lbs

### Sharp Bits

50% narrower than the standard bit - 15.5mm wide. Allows larger aggregate to flow through.

### Penetration Bits

Narrower than standard bit - 23mm wide  
Wider gap allows larger aggregate to flow through.

### Mix and Match

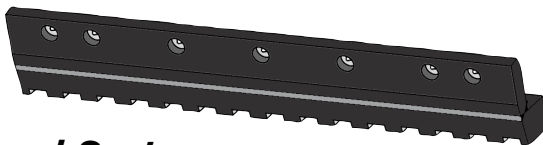
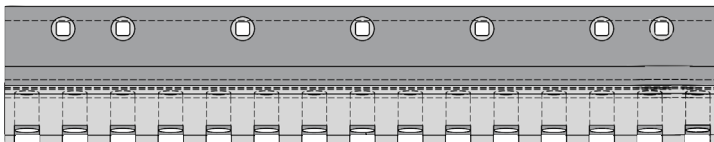
Alternate different bits to control the size of the material left behind.  
Use wide bits on the end of the moldboard to prevent excessive wear.

### Standard Bits

Baseline Bit - 30mm wide.  
Moderate penetration.

### Wide Bits

Can configure as a continuous edge.  
Twice as wide as the standard bit - 60mm.



## Board Systems

Part Number	Bolt Diameter	Length	Bit Spacing	# of Bits
1590311	0.625"	36"	Narrow	15
1590312		48"		20
1590315		36"	Wide	12
1590316		48"		16
4286747	0.750"	24"	Narrow	10
1590318		36"		15
1590317		48"	20	
4286746		24"	Wide	8
1590313		36"		12
1590314		48"		16

www.blackcatwearparts.com sales@blackcatwearparts.com Toll Free: 1.800.661.6666 T: 780.465.6666 F: 780.465.9595

Black Cat Wear Parts Ltd. produces after market replacement products designed to work with specific third party wear part systems. Reference to Caterpillar, ESCO, Super V, SV2 and other third party trademarks referred to in this publication are for informational, comparative, and descriptive purposes only. Black Cat Wear Parts Ltd. does not claim any ownership in or license to use any third party trademarks referred to in this publication and is not affiliated with, nor does it make, use or sell any products manufactured by any owner of such trademarks.

**510.0526**