



Skid Steer Parts

Base Edges

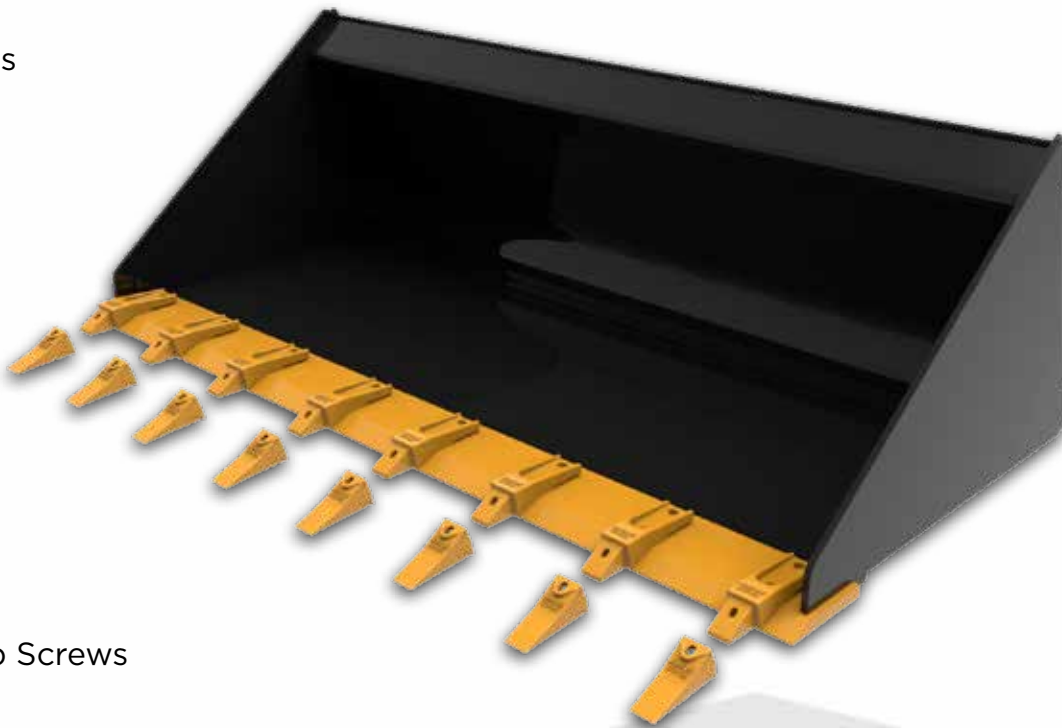
- 5/8" or 3/4" Thickness
- 6"- 8" Widths

Bolt On Edges

- 5/8", 3/4" or 1" Thick
- 6"- 8" Widths
- Straight or Serrated

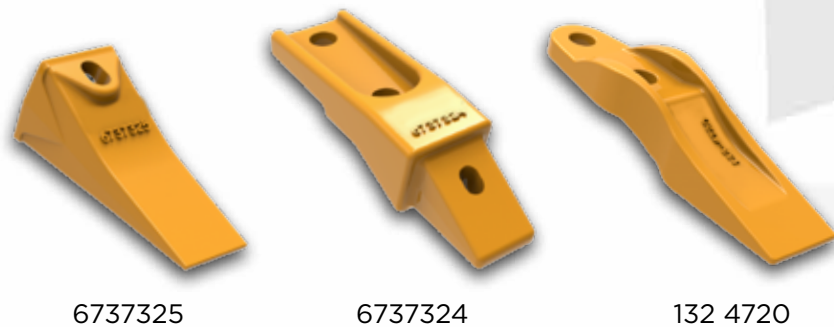
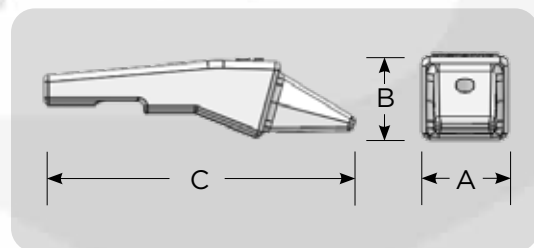
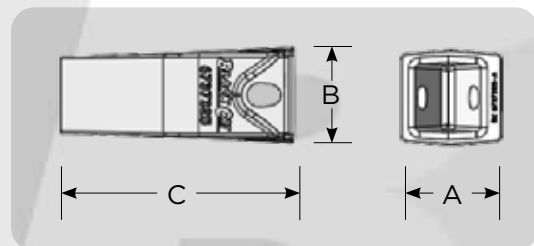
Hardware

- Plow Bolts
- Flat Head Socket Cap Screws
- Pins



Teeth & Adapters

Part Number	Description	Weight	A	B	C
6737325	Tooth	2.2 lbs	2.36"	2.26"	5.47"
6737324	Adapter	5.1 lbs	2.19"	2.13"	8.57"
132 4720	Bolt On Unitooth	4.0 lbs			



6737325

6737324

132 4720