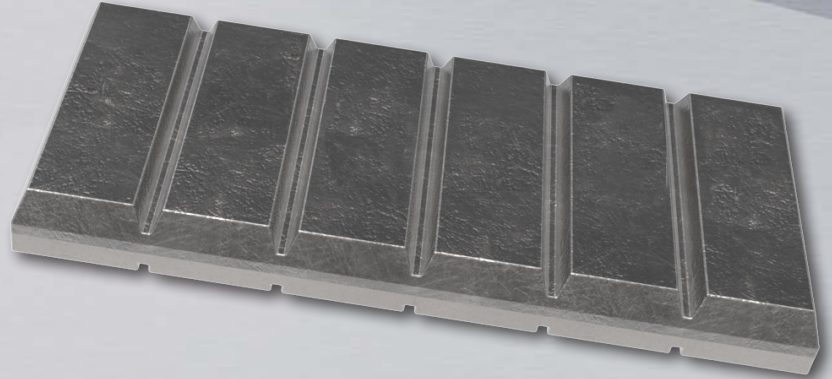


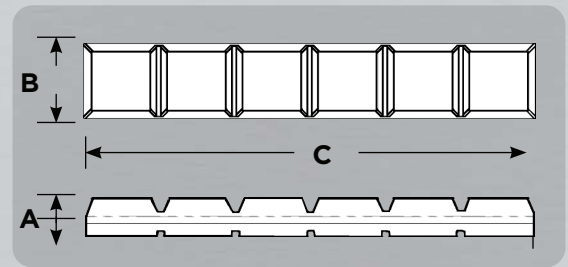


- Provides Extra Protection
- Extends Bucket Life
- Mild Steel Backing Plate
- Bars Can be Shaped and Curved
- Easily Weldable



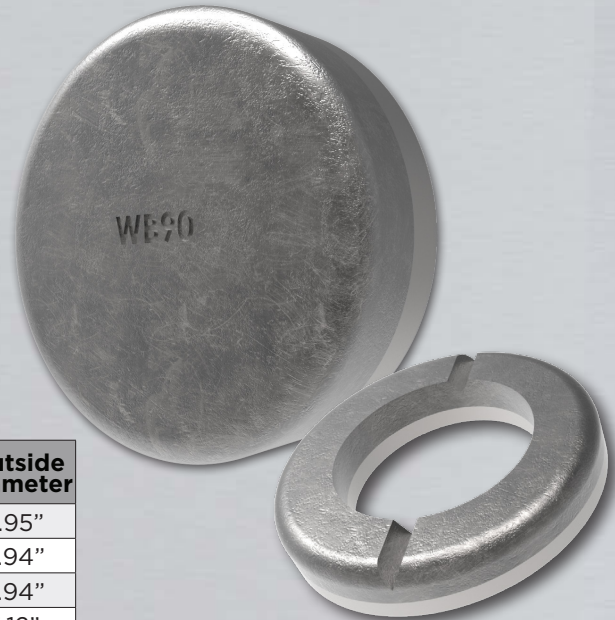
Chocky Bars

Part #	Description	Weight	A	B	C
CB25	25MM	2.2 lbs	0.98"	0.98"	9.45"
CB40	40MM	3.5 lbs	0.98"	1.57"	9.45"
CB50	50MM	4.4 lbs	0.98"	1.97"	9.45"
CB65	65MM	6.0 lbs	0.98"	2.56"	9.45"
CB90	90MM	8.4 lbs	0.98"	3.54"	9.45"
CB100	100MM	9.5 lbs	0.98"	3.94"	9.45"
CB130	130MM	11.7 lbs	0.98"	5.12"	9.45"



Wear Buttons

Part #	Description	Weight	Thickness	Diameter
WB60	WEAR BUTTON 60MM	1.3 lbs	0.98"	2.37"
WB75	WEAR BUTTON 75MM	2.2 lbs	0.98"	2.95"
WB90	WEAR BUTTON 90MM	2.9 lbs	1.14"	3.54"
WB115	WEAR BUTTON 115MM	5.8 lbs	1.26"	4.53"
WB150	WEAR BUTTON 150MM	12.3 lbs	1.61"	5.91"



Wear Donuts

Part #	Description	Weight	Thickness	Inside Diameter	Outside Diameter
DLP-1920	75OD 25ID	1.7 lbs	0.98"	0.98"	2.95"
DLP-1921	100OD 50ID	2.5 lbs	0.98"	1.97"	3.94"
DLP-1994	100OD 70ID 1P	1.8 lbs	1.26"	2.76"	3.94"
DLP-2196	130OD 80ID 11/4P	3.1 lbs	0.91"	3.15"	5.12"

Wear Plate

Part #	Description	Weight	Thickness	Inside Diameter	Outside Diameter
BC CS2	BOLT ON CHOCKY BAR	50.6 lbs	1.36"	11.73"	11.73"



910.0420

ACCESSORIES 

www.BlackCatWearParts.com sales@blackcatwearparts.com Toll Free: 1.800.661.6666 T: 780.465.6666 F: 780.465.9595

Caterpillar® and other identities and/or trademarks referred to in this publication are the registered marks of the entities noted herein. The use of any trademarks of others than Black Cat Blades Ltd. are solely and exclusively for identification, informational, comparative, and descriptive purposes. Black Cat Blades Ltd. is not affiliated with any owner of such registered marks and does not make, use, or sell any products manufactured by any such entity identified in this publication.

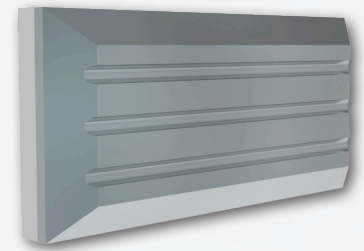


BLACK CAT

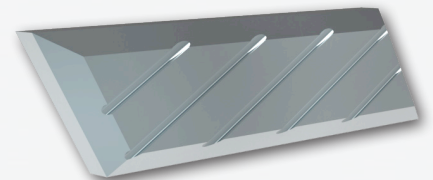
WEAR PARTS

Skid Bars

Part #	Description	Weight	Thickness	Width	Length
SB403	4X8-3/8	11.9 lbs	1.34"	3.98"	8.38"
SB404L	4X8-3/8 LH	12.8 lbs	1.34"	3.98"	8.38"
SB405R	4X8-3/8 RH	12.8 lbs	1.34"	3.98"	8.38"
SB406	4X12	16.3 lbs	1.34"	3.98"	12.00"
SB407L	4X12 LH	18.3 lbs	1.34"	3.98"	12.00"
SB408R	4X12 RH	18.3 lbs	1.34"	3.98"	12.00"
SB409	4X6	8.4 lbs	1.34"	3.98"	6.00"
SB410L	4X6 LH	9.3 lbs	1.34"	3.98"	6.00"
SB411R	4X6 RH	9.3 lbs	1.34"	3.98"	6.00"
SB413	6X8	19.2 lbs	1.77"	6.00"	8.00"
2804099	USE SB413 38MM	0	1.45"	6.00"	8.00"



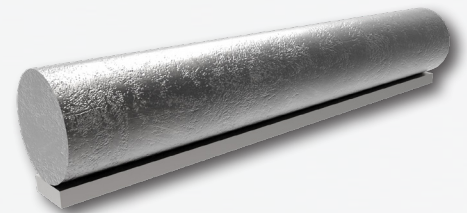
SB403



SB407L

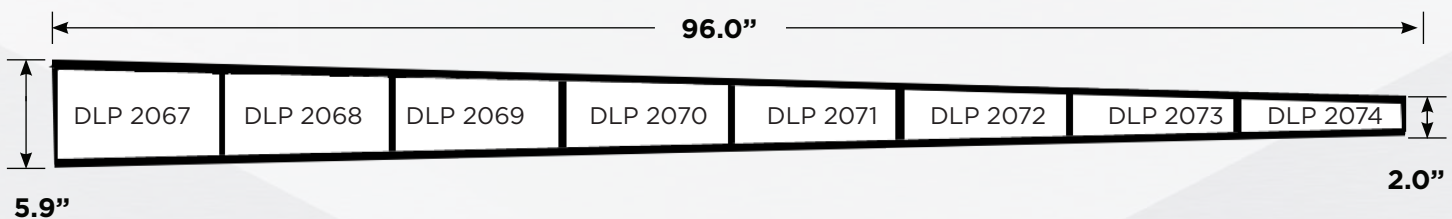
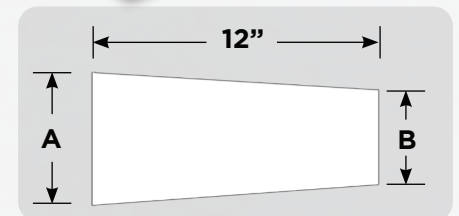
Roll Bars

Part #	Description	Weight	Diameter	Length
2804096	1.25" Roll Bar	2.7 lbs	1.26"	9.00"
2804097	2.00" Roll Bar	12.1 lbs	2.00"	12.00"
2804098	3.00" Roll Bar	24.3 lbs	3.00"	12.00"



Grizzly Bars

Part #	Description	Weight	A	B
DLP-2067	GRIZZLY BAR 150-138MM	29.7 lbs	5.91"	5.41"
DLP-2068	GRIZZLY BAR 138-125MM	27.5 lbs	5.41"	4.94"
DLP-2069	GRIZZLY BAR 125-113MM	25.3 lbs	4.94"	4.44"
DLP-2070	GRIZZLY BAR 113-100MM	22.7 lbs	4.44"	3.94"
DLP-2071	GRIZZLY BAR 100-88MM	20.0 lbs	3.94"	3.44"
DLP-2072	GRIZZLY BAR 88-75MM	16.3 lbs	3.44"	3.00"
DLP-2073	GRIZZLY BAR 75-63MM	13.6 lbs	3.00"	2.50"
DLP-2074	GRIZZLY BAR 63-50MM	11.9 lbs	2.50"	2.00"
DLP-2075	GRIZZLY BAR 150-141MM	30.7 lbs	5.91"	5.50"
DLP-2076	GRIZZLY BAR 141-131MM	28.0 lbs	5.50"	5.16"
DLP-2077	GRIZZLY BAR 131-122MM	26.3 lbs	5.16"	4.81"
DLP-2078	GRIZZLY BAR 122-113MM	24.1 lbs	4.81"	4.44"
DLP-2079	GRIZZLY BAR 113-103MM	22.4 lbs	4.44"	4.06"



910.0420

ACCESSORIES

