



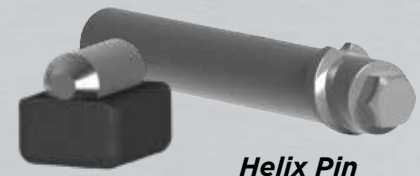
Convert to Revolution Fully Hammerless without changing Adapters or Ripper Shanks



REVOLUTION

BLACK CAT HAMMERLESS PATENTED TECHNOLOGY

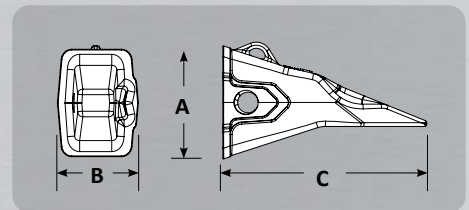
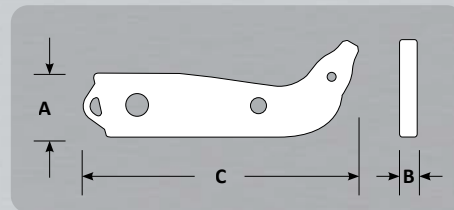
- **More Details on Reverse**



RVR 350PTM

Lock

Helix Pin



Part Number	Description	Weight	A	B	C
RVR 1380797 *	Ripper Shank	125 lbs	6.86"	2.92"	28.24"
RVR 1182140	500 Ripper Shank	1619 lbs	15.75"	3.94"	98.66"
RVR 350PTM	Ripper Tooth	29 lbs	6.17"	4.72"	14.13"
RVR 350PTMCI2	Ripper Tooth with Carbide	31 lbs	6.17"	4.72"	14.13"
RVR 500RR	Ripper Tooth	71 lbs	8.75"	6.18"	19.00"
RVR 350NOSE	Ripper Nose	17 lbs	6.10"	2.92"	8.30"
RVR 500SEG **	Ripper Nose	146 lbs	12.61"	3.96"	20.47"
RVR 350P	Helix Pin	0.8 lbs			
RVR 500P	500 Pin	2.0 lbs			
P2RL	Rubber Lock				

NOTE: *Replaces 1380797 & 9J3139

****Replaces 1038115**

RVR 1380797

270.0220

TEETH & ADAPTERS - REVOLUTION

www.BlackCatWearParts.com sales@blackcatwearparts.com Toll Free: 1.800.661.6666 T: 780.465.6666 F: 780.465.9595

Caterpillar® and other identities and/or trademarks referred to in this publication are the registered marks of the entities noted herein. The use of any trademarks of others than Black Cat Blades Ltd. are solely and exclusively for identification, informational, comparative, and descriptive purposes. Black Cat Blades Ltd. is not affiliated with any owner of such registered marks and does not make, use, or sell any products manufactured by any such entity identified in this publication.



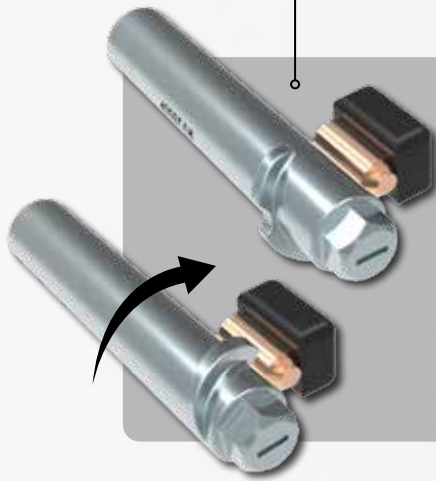
BLACK CAT

WEAR PARTS

- Fully Stabilized Nose & Pocket
- Hammerless Pin for Safe & Easy Installation
- Patented Technology



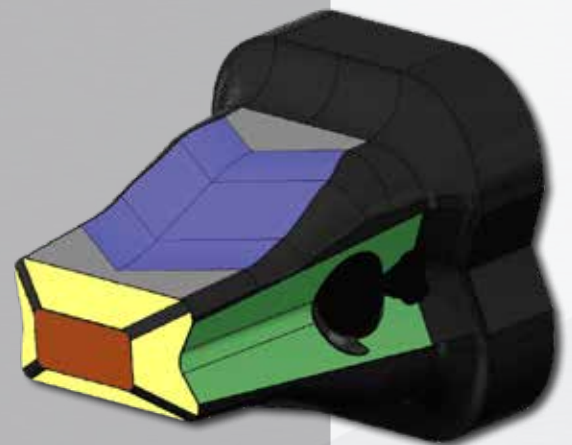
Hammerless Pin & Lock




- Fully hammerless installation & removal for safe and easy use.
- Accept both imperial or metric socket, female square drive on opposite end.
- Lock and pin may be used on either side of nose.
- Locks with 180° clockwise turn of pin with socket wrench.
- Pin removal pulls out excess material around the pin head.

Fully Stabilized Nose & Tooth Pocket

- Primary contact for frontal loads. Bottom out fit with pocket mitigates fit erosion through service life.
- Secondary contact areas for off center frontal loads. Planer bearing areas provide longer service life.
- Redundant frontal load bearing if the primary and secondary areas are worn from tooth overuse.
- Front = Primary bearing area for vertical tooth loads. Rear (opposite side) = Reactive load bearing area for vertical loads.
- V design forces the tooth to center on the nose when heavy side forces are encountered. Preventing pin loading and increases fit integrity.



270.0220

TEETH & ADAPTERS - REVOLUTION 

www.BlackCatWearParts.com sales@blackcatwearparts.com Toll Free: 1.800.661.6666 T: 780.465.6666 F: 780.465.9595

Caterpillar® and other identities and/or trademarks referred to in this publication are the registered marks of the entities noted herein. The use of any trademarks of others than Black Cat Blades Ltd. are solely and exclusively for identification, informational, comparative, and descriptive purposes. Black Cat Blades Ltd. is not affiliated with any owner of such registered marks and does not make, use, or sell any products manufactured by any such entity identified in this publication.