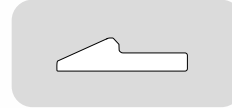


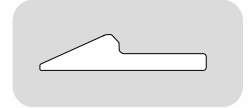


Rolled Bar Half Arrow Edges

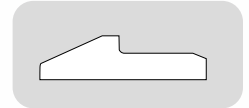
- Available with or without holes
- Up to 168" in length
- Carbide Overlay available



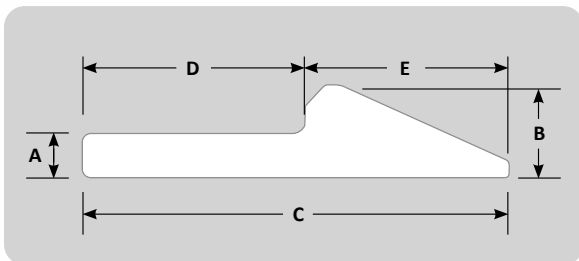
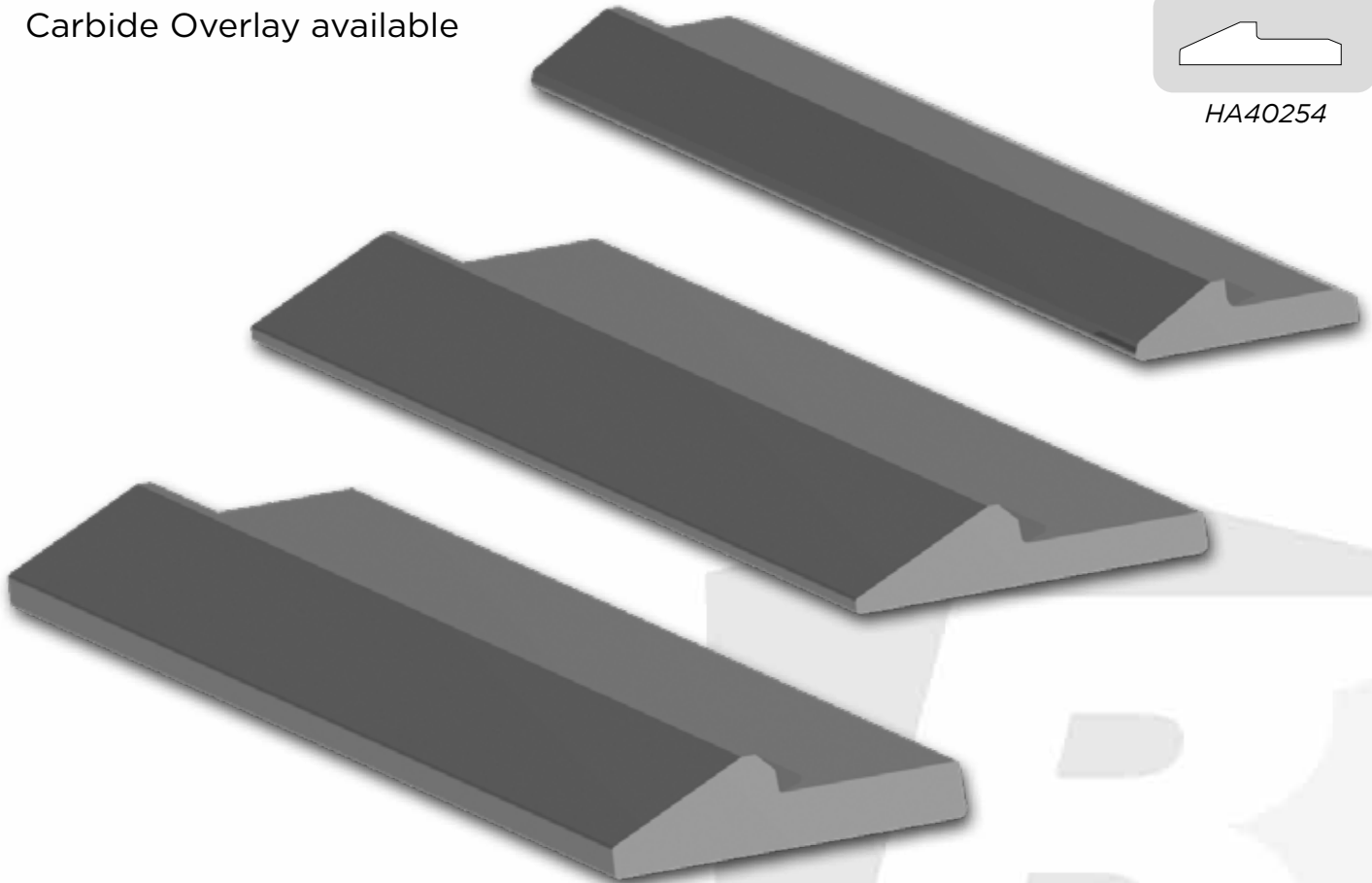
HA25161



HA28254



HA40254



Profile	A	B	C	D	E	Hardness Values
HA25161	1.00"	1.78"	6.33"	3.62"	2.70"	Rockwell: 39-45 HRC (No Holes) 44-52 HRC (With Holes)
HA28254	1.13"	2.25"	10.00"	5.19"	4.81"	Brinell: 360-420 (No Holes) 415-515 HRC (With Holes)
HA40254	1.56"	2.69"	10.00"	5.19"	4.81"	